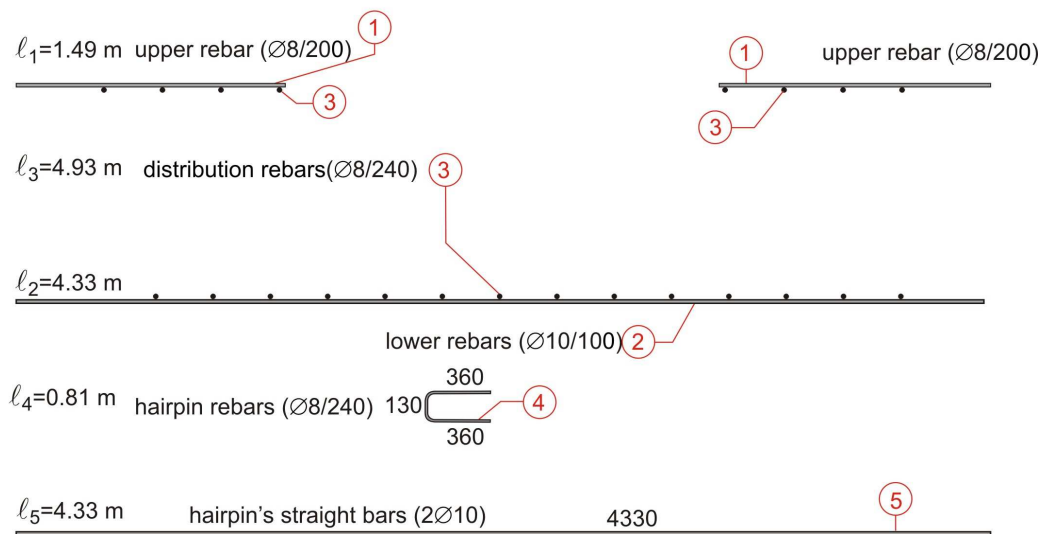
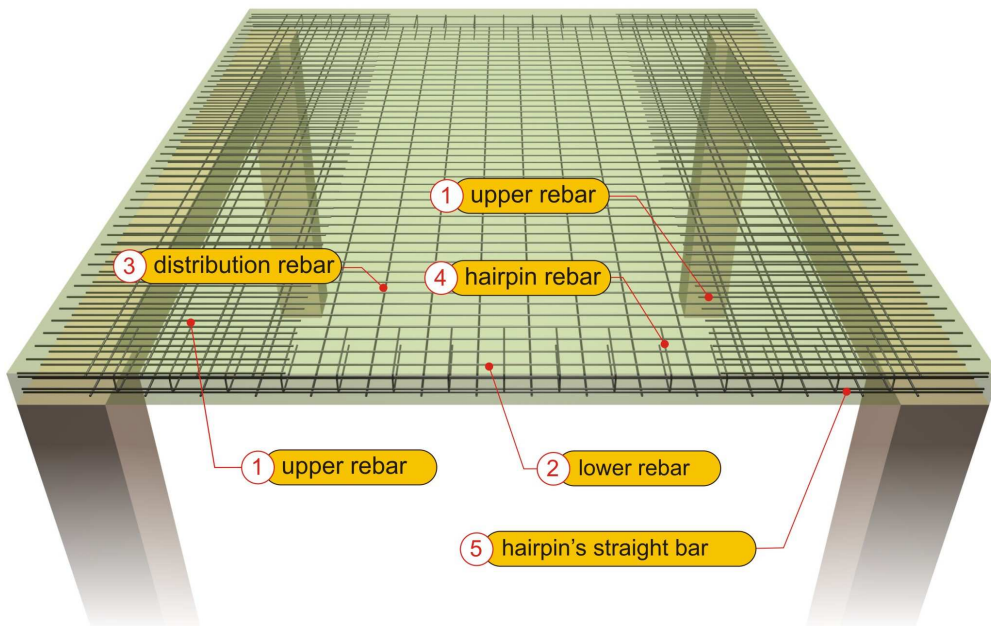


$l_1=4.42$ m	bend up rebars ( $\varnothing 10/200$ )	2650	①
730			
			160
$l_2=4.33$ m	straight rebars ( $\varnothing 10/200$ )	4330	②
$l_3=4.93$ m	distribution rebars ( $\varnothing 8/240$ )	4930	③
$l_4=0.81$ m	hairpin rebars ( $\varnothing 8/240$ )	360	④
		360	
$l_5=4.33$ m	hairpin's straight rebars ( $2\varnothing 100$ )	4330	⑤

*Behavior and reinforcement of one-way slab*



Reinforcing the one-way slab of the above example by means of straight-length bars

<project: slabs15>